



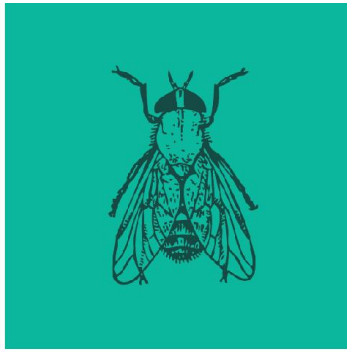
PLATE

- **GRADE 250**
- **GRADE 350**

AUSTRALIAN STANDARDS

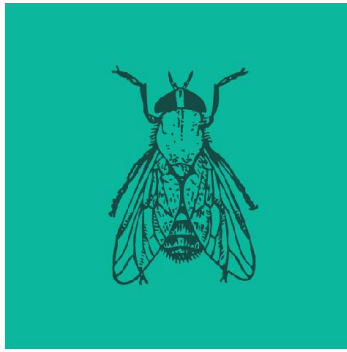
- AS/NZS 3678:2011

Thickness (mm)	Mass (kg/m)	Width (mm)	Length (M)	Standard Sheet Thickness Colour
5	39.25	1200	2.4	Orange
		1500	3.0	Orange
		1800	3.0	Orange
		2400	6.0	Orange
6	47.10	1200	2.4	White
		1500	3.0	White
		1800	3.0	White
		2400	6.0 & 9.0	White
		3000	9.0	White
8	62.80	1200	2.4	Red
		1500	3.0	Red
		1800	3.0 & 6.0	Red
		2400	6.0 & 9.0	Red
		3000	9.0	Red
10	78.50	1200	2.4	Yellow
		1500	3.0	Yellow
		1800	3.0	Yellow
		1800	6.0	Yellow
		2400	6.0 & 9.0	Yellow
		3000	9.0	Yellow
12	94.20	1200	2.4	Purple
		1500	3.0	Purple
		1800	3.0 & 6.0	Purple
		2400	6.0 & 9.0	Purple
		3000	6.0 & 9.0	Purple



Wagga Wagga (02) 6971 8255
Bomen (02) 6921 9119
Deniliquin (03) 5881 5541
Coolamon (02) 6927 3024
Bega (02) 6494 7600

16	125.60	1200	2.4	Blue
		1500	3.0	Blue
16	125.60	1800	3.0 & 6.0	Blue
		2400	6.0 & 9.0	Blue
		3000	6.0 & 9.0 & 12.0	Blue
		3200	12.0	Blue
20	157.00	1200	2.4	Green
		1500	3.0	Green
		1800	3.0 & 6.0	Green
		2400	6.0 & 9.0	Green
		3000	9.0	Green
25	196.25	1200	2.4	Black
		1500	3.0	Black
		1800	3.0 & 6.0	Black
		2400	6.0 & 9.0	Black
		3000	9.0	Black
28	219.80	2400	6.0 & 9.0	
32	251.20	1200	2.4	
		1500	3.0	
		1800	3.0 & 6.0	
		2400	6.0 & 9.0	
36	282.60	2400	6.0 & 9.0	
40	314.00	1200	2.4	
		1800	6.0	
		2400	6.0 & 9.0	
45	353.25	2400	6.0 & 9.0	
50	392.50	1200	2.4	
		1800	6.0	
		2400	6.0 & 9.0	
55	431.75	2400	6.0 & 8.4	
60	471.00	1800	6.0	
		2400	6.4	
70	549.50	1800	6.0	
		2400	6.0	



Wagga Wagga (02) 6971 8255
Bomen (02) 6921 9119
Deniliquin (03) 5881 5541
Coolamon (02) 6927 3024
Bega (02) 6494 7600

80	628.00	1800	6.0	
		2400	6.0	
90	706.50	1800	6.0	
100	785.00	1800	5.6	
		2400	5.2	
110	863.50	1800	5.0	
		2400	4.0	
120	942.00	1800	4.6	
		2400	3.1	
130	1021.00	1800	4.2	
		2400	3.1	
140	1099.00	1800	3.9	
		2400	2.9	
150	1177.50	1800	3.6	
		2400	2.7	

Steel
Supplies

can provide the following processing services for this product:

- Processing (Punching, Drilling, Bevelling, Counter Sinking, Counter Boring)
- Laser cut
- Plasma cut



Wagga Wagga	(02) 6971 8255
Bomen	(02) 6921 9119
Deniliquin	(03) 5881 5541
Coolamon	(02) 6927 3024
Bega	(02) 6494 7600